

PART OF THE NW 1/4 OF SEC. 15, T.5N., R.1W., S.L.B. & M.  
**SUNNYSIDE MANOR SUBDIVISION - PHASE 2**

311

LOTS 13 - 26

IN SOUTH OGDEN CITY

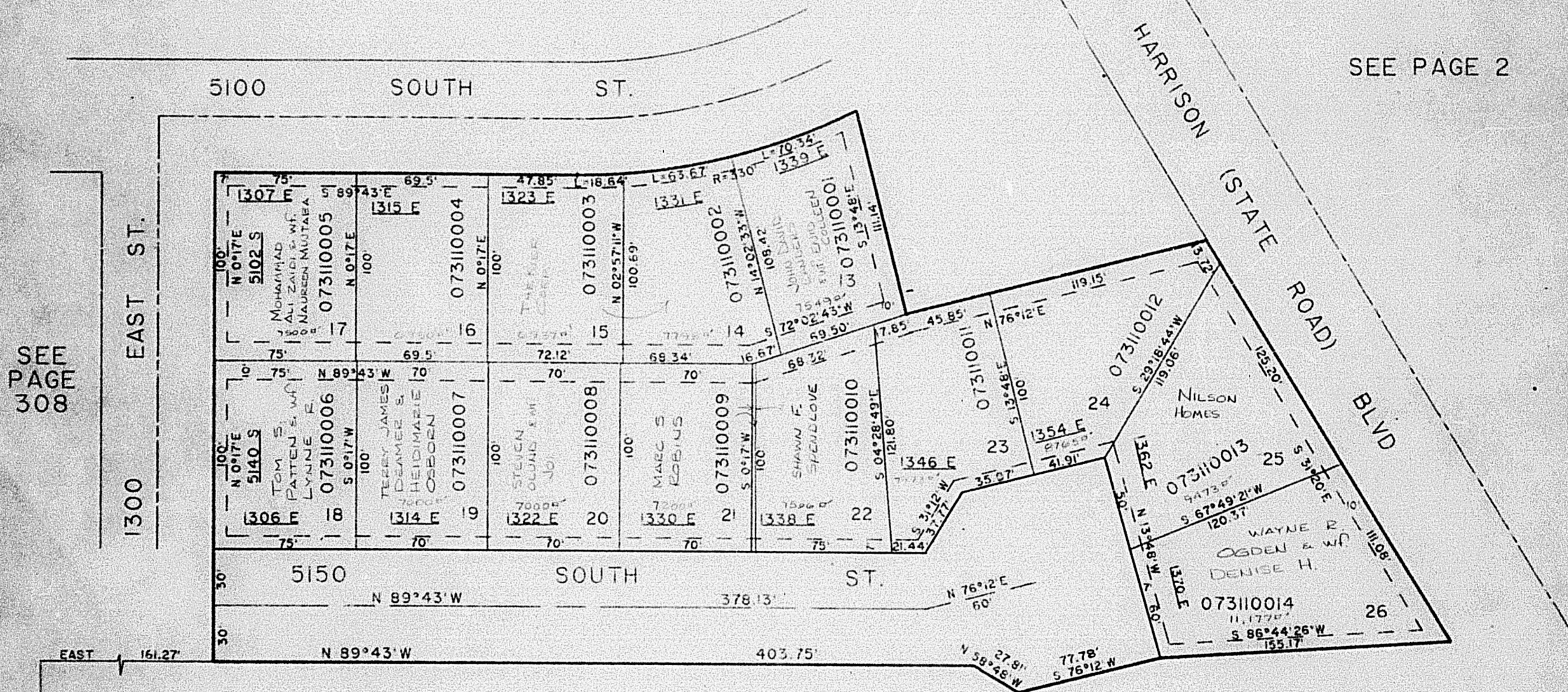
TAXING UNIT: 27

SCALE 1" TO 50'

EXCEPT WHERE OTHERWISE SHOWN  
 ALL LOTS OWNED BY  
 BRUCE STEPHENS

SEE PAGE 308

SEE PAGE 2



SEE PAGE 308

SEE PAGE 2

A 10' UTILITY EASEMENT EACH SIDE OF  
 PROPERTY LINE AS INDICATED BY DASHED LINES  
 ALL EASEMENTS TO BE USED FOR IRRIGATION,  
 WATER LINES, DRAINAGE, SANITARY & STORM  
 SEWER, POWER POLES, TELEPHONE LINES AND  
 OTHER PUBLIC UTILITIES. FRONT PROPERTY  
 LINE UTILITY EASEMENTS ARE 7' WIDE.  
 OTHER WIDTHS OF EASEMENTS ARE SHOWN.

FOR COMPLETE ENG DATA SEE  
 ORIG. DEDICATION PLAT IN  
 BOOK 28, PAGE 44 OF RECORDS

WEST 1/4 COR  
 SEC 15 T5N R1W